



# CONNECTING YOUR PATIENTS TO ACCESS SOLUTIONS **OPKO CONNECT**



**Rayaldee® is covered by payors representing most U.S. commercially insured patients, and by payors representing most U.S. Medicare Part D patients.†**

**Most patients have an out-of-pocket cost for Rayaldee® of less than \$10 per month.\***

## **RAYALDEE® PATIENT ASSISTANCE PROGRAM (PAP)**

For patients without pharmacy insurance coverage or patients unable to afford their Rayaldee® copay, OPKO Connect has a Rayaldee® Patient Assistance Program (PAP) that offers free medication. Eligibility criteria apply and annual re-enrollment is required.\*\*



## **WANT TO LEARN HOW TO HELP YOUR PATIENTS ACCESS RAYALDEE®?**

Watch our **REIMBURSEMENT NAVIGATION GUIDE VIDEO**. Scan here:



**IT'S SIMPLE. WE CAN HELP. WE CARE.**

† Rayaldee® is covered by payers representing more than 80% of the U.S. commercially insured patients. More than 70% of Medicare Part D lives have unrestricted access to Rayaldee® (source: Managed Markets Insight & Technology Q1 2022).

\*Eligible commercially insured patients can fill their Rayaldee® prescription for \$5 per month with eVoucherRx™, a program from RelayHealth that automatically applies copay savings at the point of dispensing. If the patient's pharmacy does not work with RelayHealth eVoucherRx™, then OPKO Connect has a \$5 per month commercial copay program. Eligible Medicare Part D Low Income Subsidy patient out-of-pocket cost is typically \$0 - \$9.85 per month (source: OPKO Connect and Specialty Pharmacy case data 2022).

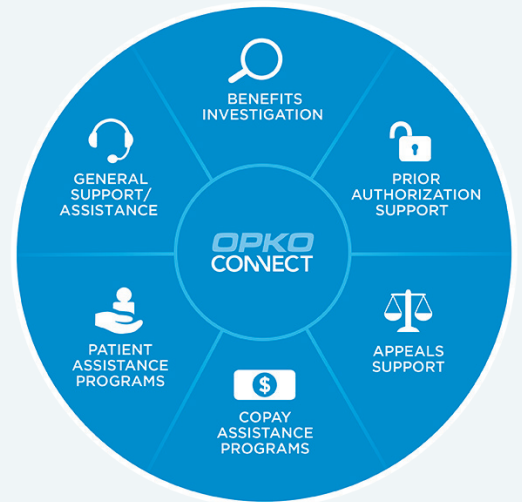
\*\*Patient must be prescribed Rayaldee® for on-label usage and meet the financial criteria. Contact OPKO Connect at 1-844-414-OPKO (6756) for more information.

# WHAT IS OPKO CONNECT?

OPKO Connect is a patient reimbursement hub offering support for your office on behalf of your patients who have been prescribed Rayaldee®.

## Services include:

- Benefits Investigation
- Prior Authorization (PA) Support
- Support for Appeals if the PA is Denied
- Copay Assistance
- Patient Assistance Program (PAP)
- Contact patients to help maintain adherence to therapy



Contact **OPKO Connect** to help your patients to receive Rayaldee®.

Phone: 1-844-414-OPKO (6756)

Email: [opkoconnect@rxallcare.com](mailto:opkoconnect@rxallcare.com)

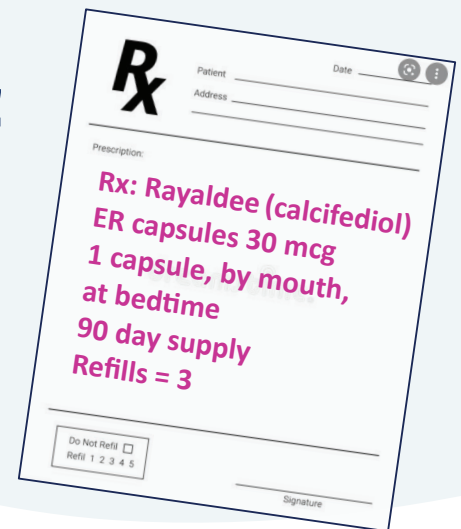
Hours: Monday through Friday, 8am to 8pm ET

## Get Started. Prescribe Rayaldee® TODAY!

Start by sending a **Service Request Form** (SRF) to OPKO Connect or a prescription to your preferred specialty pharmacy.

Visit [www.rayaldee.com/hcp-financial-support/](http://www.rayaldee.com/hcp-financial-support/) to download the **Service Request Form** and to find additional information about OPKO Connect support.

**MORE THAN  
7,388,448**  
therapy days of  
Rayaldee® to date.\*



\*IQVA data as of March 4, 2022

### INDICATION AND LIMITATIONS OF USE:

Rayaldee® (calcifediol) extended-release 30 mcg capsules is indicated for the treatment of secondary hyperparathyroidism in adults with stage 3 or 4 chronic kidney disease and serum total 25-hydroxyvitamin D levels less than 30 ng/mL. Rayaldee® is not indicated in patients with stage 5 chronic kidney disease or end-stage renal disease on dialysis.

### IMPORTANT SAFETY INFORMATION:

• **Hypercalcemia:** excessive administration of vitamin D compounds, including Rayaldee®, can cause hypercalcemia and hypercalciuria. Severe hypercalcemia due to substantial overdosage of vitamin D and its metabolites may require emergency attention. Patients should be informed about the symptoms of elevated calcium. • **Digitalis toxicity:** potentiated by hypercalcemia of any cause. Monitor serum calcium and signs and symptoms of digitalis toxicity more frequently when initiating or adjusting the dose of Rayaldee®. • **Adynamic bone disease:** monitor for abnormally low levels of parathyroid hormone (PTH) levels when using Rayaldee® and adjust dose if needed. • The most common adverse reactions (≥3% and more frequent than placebo) were anemia, nasopharyngitis, increased blood creatinine, dyspnea, cough, congestive heart failure and constipation. • Care should be taken while dosing Rayaldee® with cytochrome P450 inhibitors, thiazides, cholestyramine or drugs stimulating microsomal hydroxylation due to the potential for drug interactions. • Serum calcium should be below 9.8 mg/dL before initiating treatment. • Monitor serum calcium, phosphorus, 25-hydroxyvitamin D and parathyroid hormone (PTH) 3 months after starting therapy or changing dose.

**Please see Important Safety Information and Full Prescribing Information available at [www.rayaldee.com](http://www.rayaldee.com)**

RAYALDEE® is a registered trademark of EirGen Pharma Ltd. OPKO Renal is a division of OPKO Health, Inc. © 2022 OPKO Pharmaceuticals, LLC. All rights reserved. OP-US-0579-032022.v2